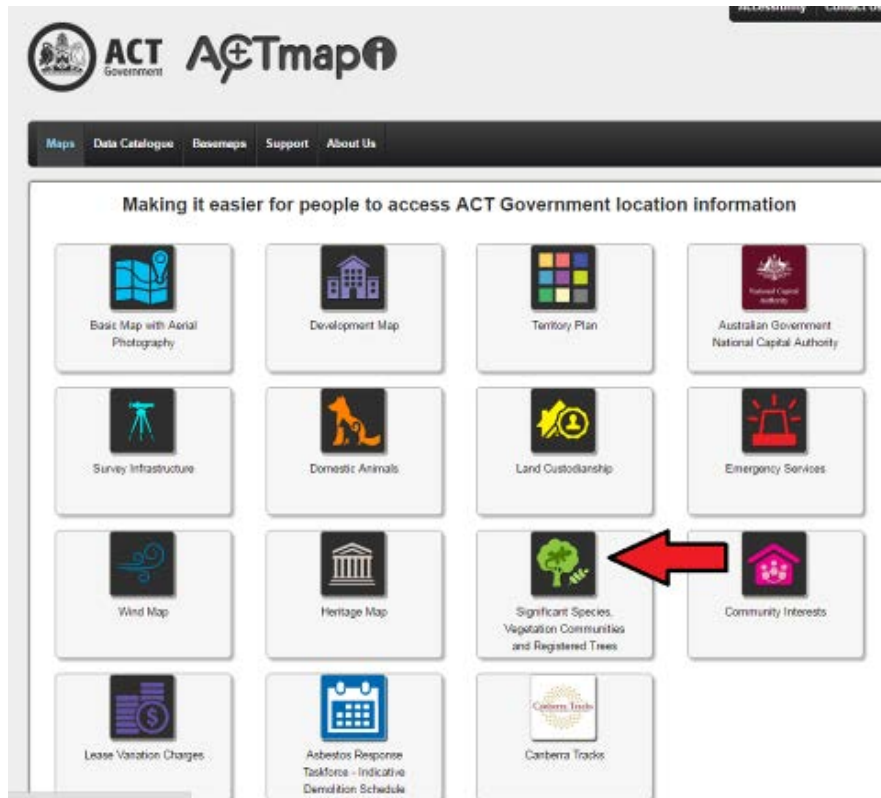


Trees on the ACT Provisional and Full Tree Register can be viewed through [ACTMAPi](#).

How to view trees on the 'Significant Species, Vegetation Communities and Registered Trees' map

1. Select the 'Significant Species, Vegetation Communities and Registered Trees' map



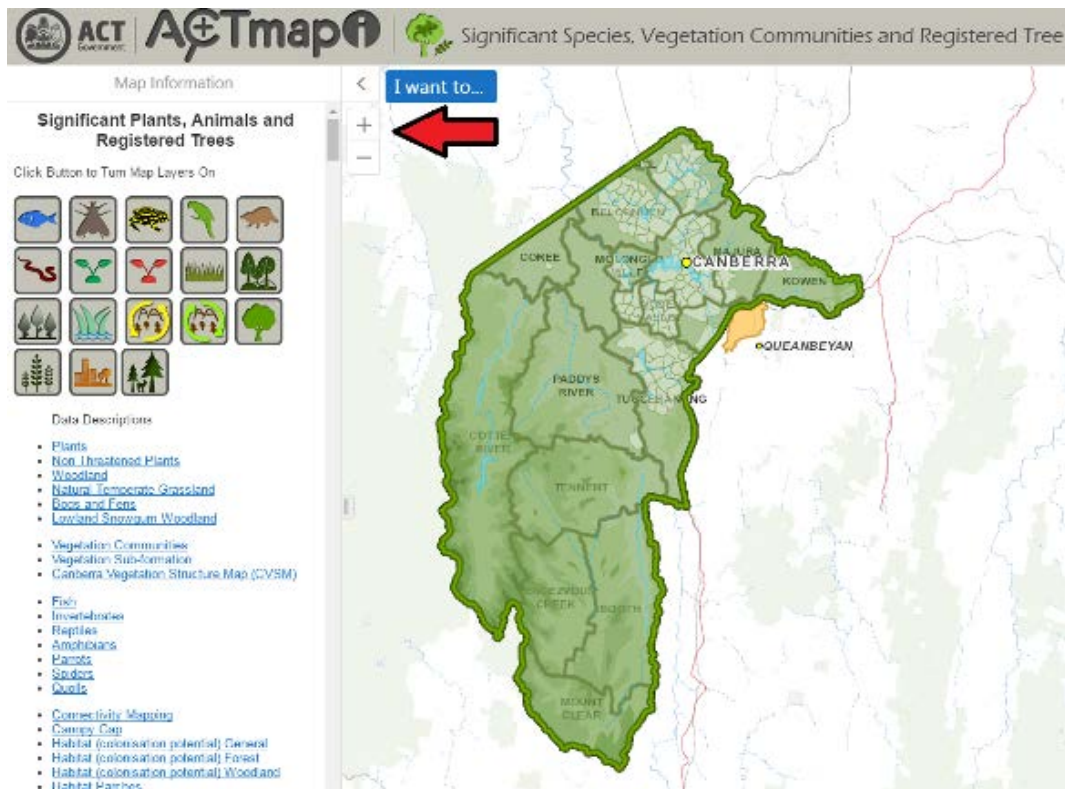
2. To view the tree data, click on the tree icon.

Significant Plants, Animals and Registered Trees

Click Button to Turn Map Layers On



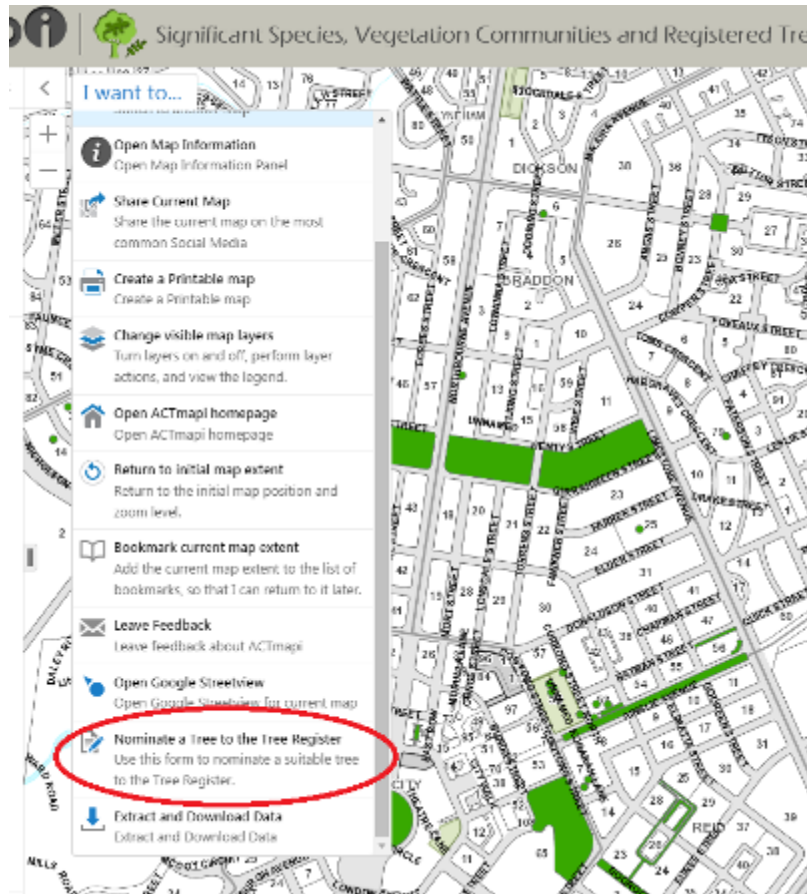
3. The map is scale dependent, so you will need to zoom in on the map as the trees will not be seen when the map is zoomed out to its full extent.



4. To view more information about the tree(s), select 'Tools', 'Point' and then click on the green marker on the map.



- To nominate a new tree to the register, select the 'I want to...' button then select 'Nominate a Tree to the Tree Register'. This will direct you to the Access Canberra smartform.



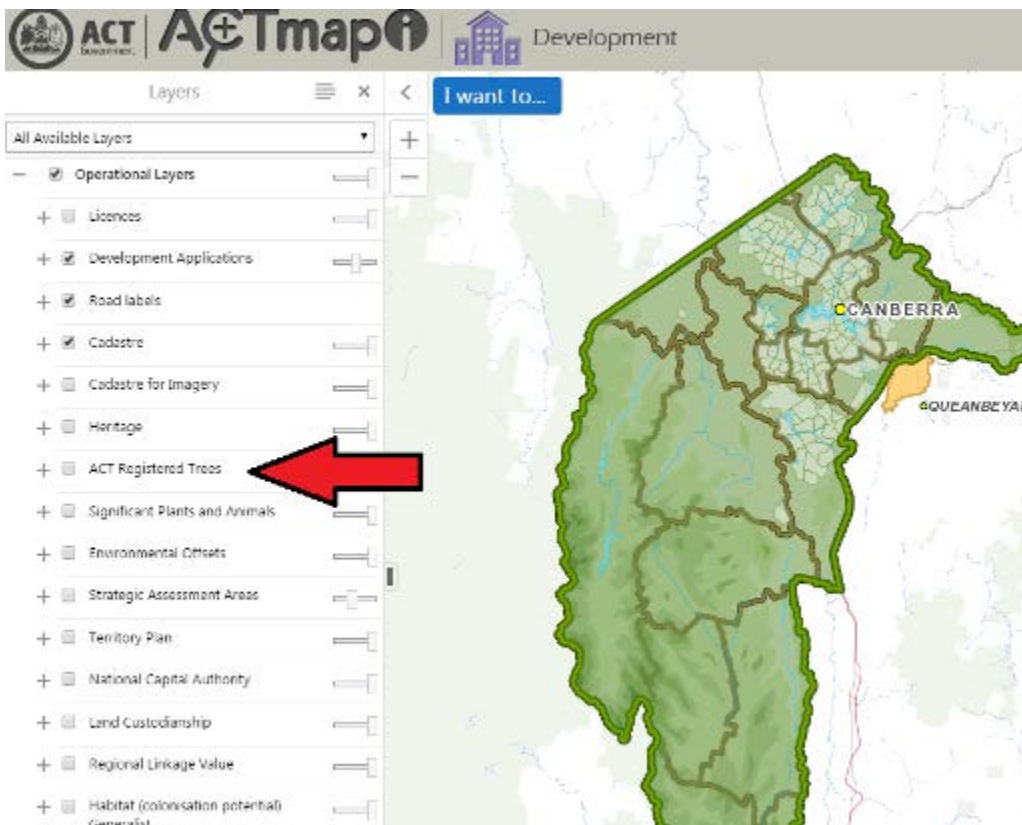
Development map

The ACT Tree Register Data also appears on the Development map available on the [ACTMAPi homepage](#).

- Select 'Development Map' on the [ACTMAPi homepage](#).



2. Turn on the tree layer



3. Follow the previous steps 3-5 to view more information about specific trees.