



Territory and Municipal Services

## Conflicts at Traffic Signals Between Turning Traffic and Pedestrians/Cyclists

Roads ACT support the view that motorists and pedestrians/cyclists share the road space. This document aims to provide some guidance on the steps that can be taken to reduce the likelihood of a clash between pedestrians/cyclists and motor vehicles at signals where these road users turn in the same phase. Pedestrians and cyclists are referred to as vulnerable road users (VRU) throughout this document.

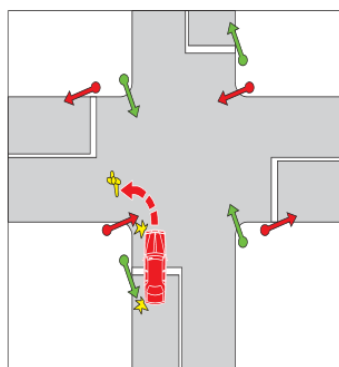
Traffic signals incorporating a left or right turn through a pedestrian crossing phase currently meet the Australian Road Rules: **Rule 62 (1)(a) A driver turning at an intersection with traffic lights must give way to any pedestrian (VRU) at or near the intersection who is crossing the road the driver is entering.**

VRUs can start crossing at anytime whilst the green crossing symbol is displayed. When the symbol turns to flashing red, VRUs can complete the crossing however they cannot start to cross. Upon VRUs clearing the crossing a motorist can then turn left or right with care. At no time whilst VRUs are on the crossing can a motorist move to travel through the crossing. A motorist is responsible to ensure the safety of the VRUs in this movement.

In certain situations a conflict between a motorist and a VRU may occur in this turning phase. When advised of these occurrences, Roads ACT will inspect the intersection, reviewing the signals to address any issues that may be apparent and recommend and carry out modifications to the intersection. These modifications may include:

- additional warning signage for motorist and VRUs,
- changes to signal phasing, or
- no change may be warranted.

When carrying out an inspection each signalised intersection will be reviewed in isolation to other signalised intersections to ensure that a “one size fits all” approach is not applied and the correct outcome for each intersection is achieved.



The vehicle must give way to the pedestrian.

**For further information please information please contact Access Canberra on 13 22 81 or [www.accesscanberra.act.gov.au](http://www.accesscanberra.act.gov.au)**